

Case study



Education

Project:	Edlington School
Location:	Doncaster
Products Used:	Dualframe 55mm casement windows & Dualframe Window wall
Architect:	Race Cottam Associates, Sheffield
Fabricator/Installer:	Bonam & Berry
Main Contractor:	Norwest Holst



Edlington School, Doncaster is an element of the £45m Doncaster Schools PFI, designed by Race Cottam Architects and constructed by Norwest Holst.

Fenestration Details

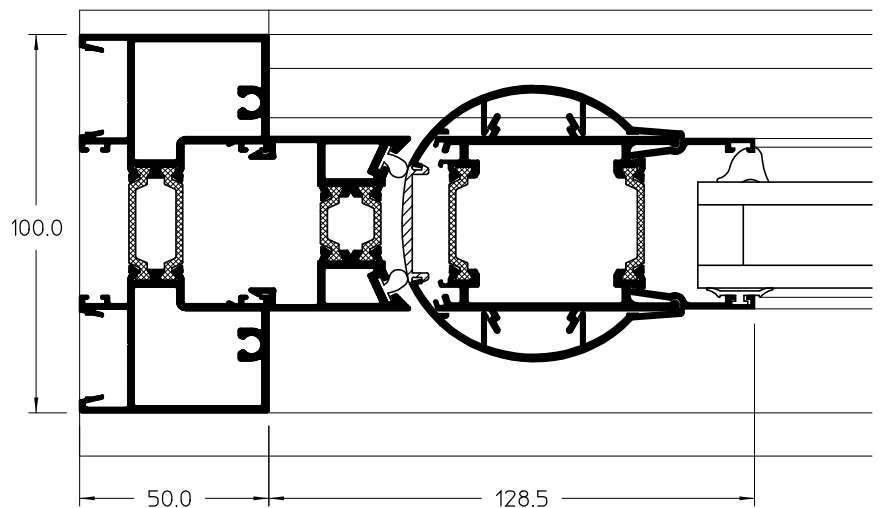
Sapa's Elegance 52 curtain wall systems and Dualframe Window Wall are used throughout, the Window Wall enabling rapid installation due to it's high level off-site manufacture. These are complemented by the new Sapa ST thermally broken door, which incorporates a robust integrated anti finger trap which will not deteriorate with use or be damaged by abuse. See detail below.

Sapa worked with race Cottam and specialist contractor Bonam and Berry to resolve natural ventilation requirements through the window configurations

Sapa products were also chosen for the second element of the PFI, another secondary school at Mexborough which was constructed at the same time.

Education Specialists

As market leader in the education sector, we have an enviable track record in both refurbishment and new build. Our specialist subcontractors are able to work to tight deadlines both during holidays and term time, using decanting schemes to minimise disruption. Robust hardware and fit-for-purpose design help to minimise replacement costs and therefore reduce full-life costs.



ST Thermally Broken Door with Anti Finger Trap stile section

Sapa Building Systems Limited

Alexandra Way, Ashchurch, Tewkesbury, Gloucestershire. GL20 8NB

T 01684 853500 F 01684 851850

info@sapabuildingsystems.co.uk www.sapabuildingsystems.co.uk

